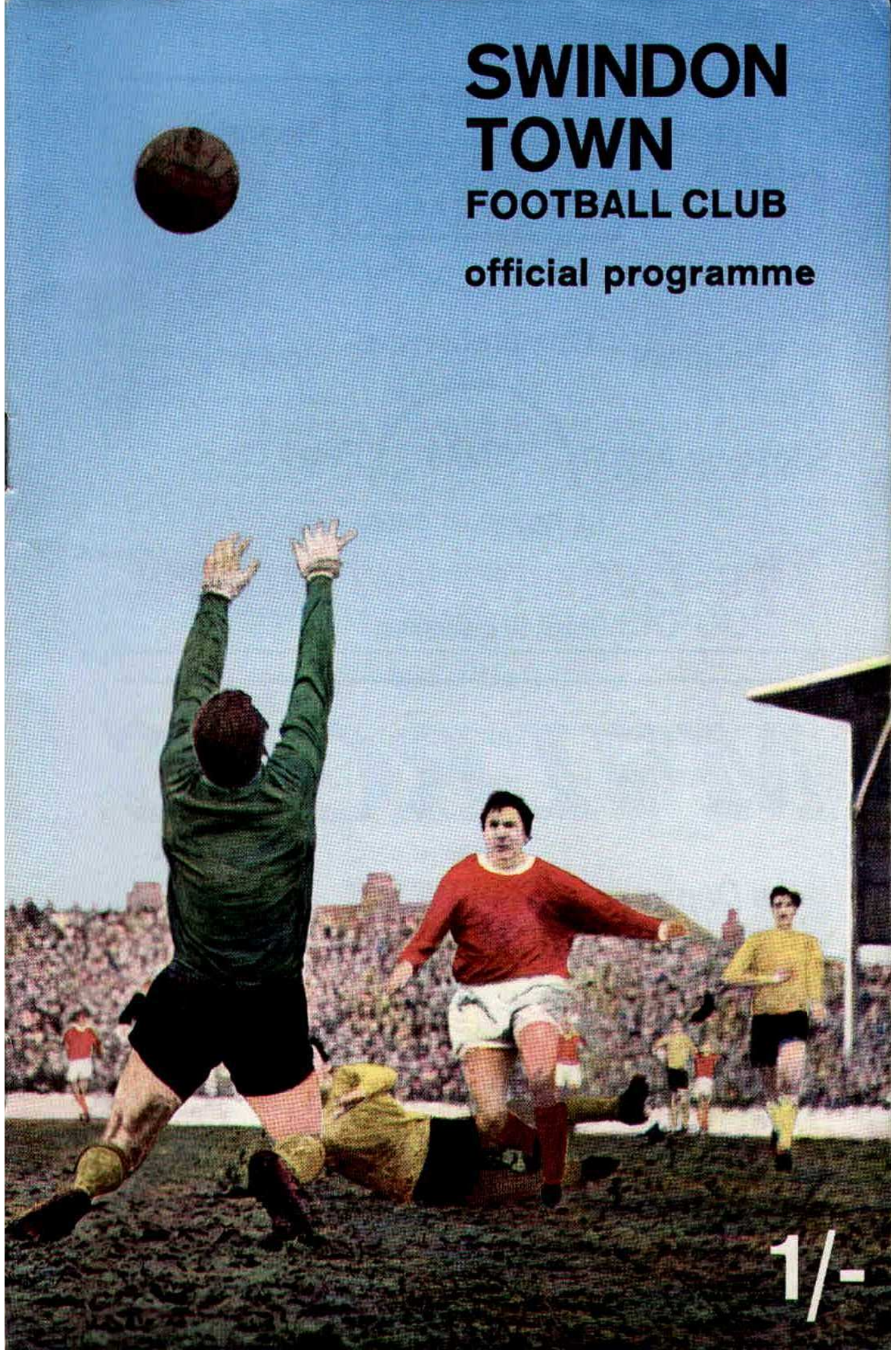


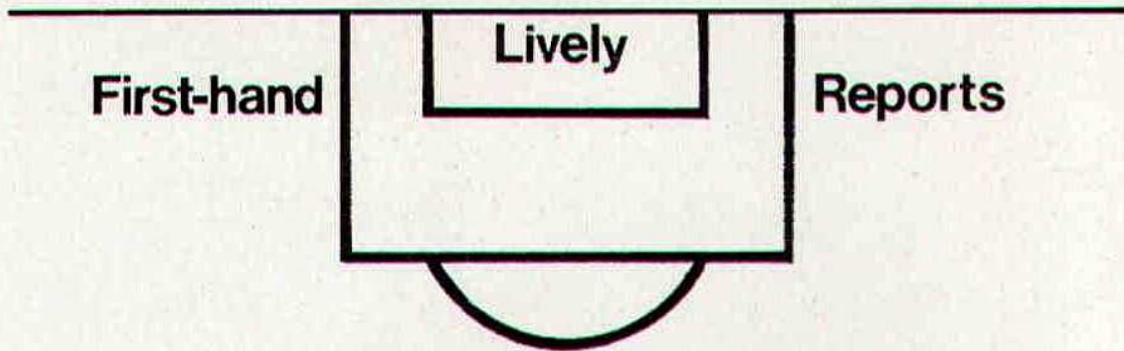
SWINDON TOWN

FOOTBALL CLUB

official programme



1/-



Complete Comprehensive Coverage
Close-up Action Shots Every Game
At home or away

The Evening Advertiser
has it covered

M^cILROY'S

the Department Store
with that something extra *Service!*

Free

DELIVERIES
ESTIMATES ON CARPETS & CURTAINS
CARPET FITTING

WILLIAM McILROY (Swindon) LTD.

Tel. 5294



SWINDON TOWN FOOTBALL COMPANY LIMITED

Registered Office: COUNTY GROUND, SWINDON

President: Mr. W. J. CASTLE

Vice-President: Mr. J. DAVIES

Directors:

Chairman: Mr. H. E. LANE

Vice-Chairman: Mr. R. FRICKER

Messrs. F. L. COLLINGS, A. W. DONE, M. EARLE, C. J. GREEN, F. PLYER,
H. WILLIAMS, K. H. WILMER and Dr. J. NICHOLAS

General Manager: Mr. R. A. MORSE

Team Manager: Mr. F. FORD

TUESDAY, 7th APRIL, 1970

Division II

SWINDON TOWN v. BLACKPOOL

Kick-off 7.30 p.m.

SWINDON TOWN	BLACKPOOL	OFFICIALS
1 Downsborough	1 Thomson	REFEREE:
2 Thomas	2 Armfield	Mr. T. H. C. Reynolds
3 Trollope	3 Bentley	(Swansea)
4 Butler	4 McPhee	
5 Burrows	5 James	
6 Harland	6 Hatton	
7 Smith	7 Murray	
8 Smart	8 Craven	
9 Horsfield	9 Pickering	LINESMEN:
10 Noble	10 Suddick	Red Flag:
11 Rogers	11 Hutchison	Mr. D. A. Munday
12	12	(New Tredegar)
Colours:	Colours:	Yellow Flag:
Red and White	White and Tangerine	Mr. T. Payne
		(Bristol)

G. A. Streetly

Tobacconist and Confectioner

10 BOURNE ROAD
MOREDON SWINDON
Telephone 4956

C. Goodenough and Sons

Removal and Storage Contractors
any distance

25 Cricklade Street Swindon
Telephone 4555 and 3855

CECIL GREEN

Artistic Decorations in all its branches

12 Armstrong Street
Swindon Wilts
Telephone 4593

W. J. SELWOOD

Telephone Swindon 5884

Saddlery

General Leather Goods Manufactured and
Repaired to Your Individual Requirements

103 BROAD STREET
SWINDON WILTSHIRE

Notton's Cafe

COUNTY ROAD

200 yards from Ground

Perfect meals at all times

For High Class
Central Heating, Plumbing
Painting and Decorating
Electrical Installations
and Repairs

**NORTH WILTS
Sanitary and Heating
Co. Ltd.**

NEWPORT STREET SWINDON
Telephone 5373/4



THE ALCOHOL FUEL

COATE GARAGE

REPAIRS - OVERHAULS - WELDING
SERVICING - REBORING - TYRES
Props. E. V. & W. H. Mattick
Marlborough Road Swindon

Leese, Ing & Co. Ltd.

Mineral Water and
Squash Manufacturers

LANSDOWN ROAD SWINDON

Telephone 22744

Maylott Studios

For Group and Sports Photographs
Official Photographer to
Swindon Town Football Club

31 Faringdon Road

Telephone 22792

Always at your service

L. Bibby

For all Types — Rags, Iron and Metal, etc.
Spot Cash Paid. Please Telephone 2101
and our van will call.

THE PADDOCK ERMIN STREET
STRATTON ST. MARGARET

news & views

Tonight we welcome to Swindon a great Club — Blackpool. This is the first time we have had the pleasure and honour of entertaining our visitors at the County Ground. Unfortunately, similarity of colours will prevent them appearing in their famous tangerine shirts and stockings — unique in the Football League. We trust they will enjoy their visit (always accepting we gain the two points) and will return to Blackpool with happy memories of Wiltshire and the “Moonrakers”.

To most of us Blackpool is still a First Division club in theory. Many fine tussles have I watched at Bloomfield Road, especially in the hey-day of manager Joe Smith (a player who, incidentally, I saw play for Bolton Wanderers in the first Cup Final at Wembley in 1923. His left wing partner was Ted Vizard, later known to many of us as manager of Swindon Town).

Talking of Cup Finals, my next visit to Wembley was in 1948 to witness one of the finest Finals ever. Unfortunately our visitors tonight were defeated on that occasion by a great Manchester United team by 4 goals to 2.

I was fortunate enough to be at Wembley again in 1953, when Blackpool gained that fantastic win over Bolton Wanderers by 4 goals to 3, to provide Sir Stanley Matthews his first ever Cup winners medal. He, along with Stan Mortensen, Eddie Shimwell and Harry Johnston played in the 1948 Final, also in the 1951 Final when Newcastle United defeated them by 2 goals to nil, and the following year made post-war history by winning the trophy in two successive seasons. This time they defeated Arsenal by 1 goal to nil — a match well remembered for the unfortunate injury to Wally Barnes.

In addition to the names already mentioned, many great players have appeared in the tangerine shirts. One of the greatest was centre-forward Jimmy Hampson, a prolific goal-scorer who, with a tally of 40 goals, enabled Blackpool to gain promotion from Division 2 in season 1929/30 with 58 points.

Until 1967, Blackpool had been members of Division 1 for a period of 23 seasons. During those palmy days they recruited many noted players, among them Peter Doherty, George Farm, Ernie Taylor, Hugh Kelly, Jackie Mudie and Bill Perry.

Even today they have one of the outstanding personalities in the game and a great England full-back, namely Jimmy Armfield, their captain, and a one club man — a credit to professional football and a wonderful example to younger players, although now a little older than when we first saw him introduce the now famous overlap for England. We trust he will continue to grace the grounds of this country for many seasons to come.

It is with great regret we record the death of Mr. Frank Deane. He with Mr. Tom Stenning, and Mr. C. Chandler, as a backroom boy began the first weekly competition, following the passing of the Small Lotteries Act. This competition undoubtedly put Swindon on its feet, and since that date it has gone from strength to strength. The Club owes much to Mr. Deane and his colleagues. It is the wish of all concerned, Directors, officials and supporters, to extend to his widow and his children their deepest sympathy in their sad loss.

THE GREAT WESTERN HOTEL

(OPPOSITE SWINDON RAILWAY STATION)

The business man's hotel with a top class
steak bar too!

Specialists in
LUNCHEONS and DINNERS
WEDDING PARTIES and RECEPTIONS
good food — quick service

J. ARKELL and SONS LIMITED Telephone SWINDON 22047

Mills and Merricks Limited

16-17 Bridge Street Swindon

Telephone 5365/6

"HOME OR AWAY"

**our function is to ensure that your home is
tastefully and economically furnished**

SWINDON'S COMPLETE HOUSE FURNISHERS

New City Office Supplies Limited

*Office and Stationery Suppliers
to Industry and Commerce*

*6 Commercial Road Swindon
Telephone Swindon (STD Code 0793) 4605*



CLARK BROS. (Swindon) LTD

Building and Civil Engineering Contractors

CONSULT US FOR
BUILDING AND CIVIL ENGINEERING
CONSTRUCTION IN ALL ITS PHASES

STRATTON ROAD

SWINDON

Telephone Swindon 27261

Supporters' Club Notes

It is with regret that we record the death of Frank Deane, on Monday, 23rd March, 1970.

Frank's active support of the "Town" was long-standing, and gathered momentum when, in 1955 he joined the Supporters' Club Committee and became Promoter of the Weekly Lotteries. Ten years later, after relinquishing this post, he became Vice-Chairman, but health reasons prevented him from holding this post longer than two years.

A member of British Rail Accounts Staff, his spare-time activities included membership of the Borough Council, and District Secretaryship of a National Friendly Society. To all these he brought a sound judgment and honesty of purpose for which he will be well-remembered by all those with whom he came into contact.

The present standing and stature of the Supporters' Club owes much to the sense of reason he infused into committee work, particularly in those years during which our Club underwent its change to the broader spheres in which it now operates and flourishes.

We offer our condolences to Mrs. Deane and her family, on this sad occasion, on behalf of the Supporters' Club Chairman, Committee, and members.

The above appreciation of Frank Deane was contributed by Mr. Tom Stenning, who, with Mrs. Stenning, was closely connected with Frank in the promotion of the Competition, and became Promoter when Frank resigned. At the funeral, in addition to a floral tribute, the Supporters' Club was represented by the Chairman, Mr. D. Pearce, and Mrs. Pearce, Mrs. Laura Smith (Assistant Gen. Secretary), Mrs. B. Ranger (Social Secretary), Mr. Phil Hart (present Weekly Competition Promoter) and Mr. and Mrs. T. Stenning. Representing the Swindon Town F.C., which benefited so much from his work, was Mr. R. Jefferies, the Company's Secretary.

From Sunday next, the Social Club Management Committee is running a Tote competition, the profits of which will be earmarked for the Social Club Reserve Fund for development. With the advent of the new stand, the building of which is expected to start closely after the end of the season, the Supporters' Club must bear its full share in the capital cost of the venture. The Social Club Reserve Fund is to be devoted to meeting the cost of the permanent Supporters' Club within the new stand. All club members are requested to assist in this venture, and to contact the Social Secretary, Mr. Bill Ranger for advice.

Face in the crowd – is it you?



In all future editions of this Season's programme we shall publish a photograph of a small section of the crowd at a previous match, one member of which will be clearly indicated by means of a circle. This person will be entitled to a free seat at the next match on producing the programme at the office.

WE AIM TO PLEASE — TRY US

Tunleys

(1)

Glass (2)

Wallpaper (3)

Paint (4)

Polishes (5)

Artist Materials (6)

Prints (7) Ladders (8) Mirrors (9) Brushes (10) Aladdin Heaters (11)

MEMBERS OF THE



12/13 Gloucester Street Swindon Wiltshire



throughout the West

you will find Bradley Estates beautifully situated to meet the requirements of modern living. If you are thinking about a new home and would like to receive full details of our current and planned estates write now to 74 Victoria Road Swindon Wiltshire. Please send me details of

- Green Meadow Estate, Swindon, Wiltshire
- Nythe Estate, Swindon, Wiltshire
- Monkton Park Estate, Chippenham, Wiltshire
- Park Hill Estate, Frome, Somerset
- Damory Down Estate, Blandford Forum, Dorset
- Harkwood Farm Estate, Poole, Dorset
- Roman Way Estate, Bourton-on-the-Water, Gloucestershire

Name.....

Address.....



BRADLEYESTATES

our visitors



BLACKPOOL FOOTBALL CLUB LIMITED

Pen Pictures — Season 1969/70

JIMMY ARMFIELD (Right-back)

Height 5ft. 10ins. Weight 12st. 4lbs. Captain of the team and an England International with 43 full caps and eight Under 23 Internationals to his credit. The longest serving member of the Club with over 600 appearances. He joined the Club as an amateur in season 1952/53, turned professional on September 4th, 1954 and has been a magnificent clubman ever since.

ALAN TAYLOR (Goalkeeper)

Height 6ft. 0½ins. Weight 13st. 11lbs. Joined Blackpool from a local junior club as an amateur in September 1962. Became a part-time professional in October 1963 and signed full-time in July 1966. With the departure of Tony Waiters became regular first team keeper and has fully justified his selection.

BILL BENTLEY (Full-back)

Height 5ft. 10ins. Weight 12st. 7lb. Another newcomer to the Blackpool Club, from Stoke City, where he has had considerable first team experience. Plays at left full-back or half-back and is a strong able defender. A former Schoolboy and Youth International.

JOHN CRAVEN (Wing-half)

Height 5ft. 11ins. Weight 13st. 3½lbs. Joined Blackpool from a local youth team and became a professional in 1965. Came to the fore three seasons ago and has now established himself in the first eleven. A strong, hard and forceful player.

TERRY ALCOCK (Centre-half)

Height 5ft. 11½ins. Weight 10st. 12lbs. Came to the Club from Port Vale in 1967. Is a strong tackling and determined player. Played regularly in the first team during the second half of last season at wing-half and appears to have settled down well.

GLYN JAMES (Centre-half)

Height 5ft. 11½ins. Weight 11st. 13lbs. Born Llangollen and has represented Wales as an Under 23 and Full International. Joined the Club as a boy in December 1957 and took over the centre-half position from Roy Gratrix in the 1964/65 season. Since then he has been the regular pivot, turning out consistent displays each week. Was the only ever present member of the side last season.

JOHN McPHEE (Wing-half)

Height 5ft. 7ins. Weight 10st. 8lb. Transferred from Motherwell in July 1962 and has been one of Blackpool's most consistent players. Was awarded Blackpool's Footballer of the Year award for the second time, a most deserving award. A great hearted player who never knows the meaning of the word defeat, he played in no fewer than seven different positions for Motherwell and five for Blackpool.

RONNIE BROWN (Outside-right or Inside-forward)

Height 5ft. 7½ins. Weight 10st. 2lbs. Joined the Club in 1965 from Whitley Bay. Is a skilled ball player who appeared regularly with the first team last season. Has a good shot and was second highest goal scorer in the 1968/69 season.

TONY GREEN (Inside-forward)

Height 5ft. 7ins. Weight 10st. 8lbs. Joined Blackpool from Albion Rovers in May 1967 and was an immediate success in his first full season. Shows superb ball control and fine distribution and has an excellent turn of speed. Was called for training with the Scottish International Team during the past season.

TOM WHITE (Centre-forward)

Height 5ft. 10½ins. Weight 12st. 6½lbs. A bustling Scot signed from Crystal Palace in March 1968. He has a powerful shot and is an excellent header of the ball. Has added much enthusiasm and punch to our attack.

Hatton's Newsagency

A. J. D. & N. J. Woodhouse

Newsagents :: Tobacconists
Confectioners

Agents for Wessex School of Motoring
Booking Agents for Rimes Coaches

6 REGENT CIRCUS (near G.P.O.)
Telephone Swindon 22731

BRETTS

PET and GARDEN SUPPLIES

32-33 Commercial Road
and
6 Cromwell Street Swindon

THE PORK SHOP

(Swindon Bacon Curing Co. Ltd.)

Specialists in

Bacon - Pork - Cooked Ham

50 FLEET STREET SWINDON
Telephone 22122

J. WILMER

Coal Merchants

St. Margaret's Road Swindon

Telephone 22535

SOUTHERN LAUNDRY CO. LTD.

Launderers and Dry Cleaners

HAYDON STREET SWINDON
Telephone 4161

At Your Service

A. E. LUDLOW LIMITED

Wholesale Fruit and Potato Merchant

COLBOURNE STREET
SWINDON WILTSHIRE
Telephone Swindon 3583

We deliver Fresh Fruit, Vegetables
and Potatoes daily—Wholesale Only

FOR ALL YOUR ANGLING NEEDS
CONSULT

Frank Woodward

Swindon's Fishing Tackle Specialist

25 HAVELOCK STREET SWINDON
Telephone 3879

For Paints of Good Quality

H. S. Hodges & Sons

(SWINDON) LTD.

Cricklade Road Swindon
Telephone 22422

Dulux, Brolac, Valspar, Wallcharm, etc.

24 hour Delivery
Service -

YOUR COMPLETE JANITORIAL SERVICE

Wilts Cleaning Supply Service

Kembrey Warehouse Rear 255 Cricklade Road
SWINDON

Telephone 21012

Represented by G. ALEXANDER
Telephone Swindon 27833

OUR VISITORS (continued)

GRAHAME ROWE (Wing-half)

Height 6ft. 2½ins. Weight 12st. 4lbs. Born at Southport. Grahame joined the Club as an amateur in May 1961 and after a period as an apprentice signed full-time in June 1963. The tallest player on the books. Has appeared also in the role of centre-half and as centre-forward.

ALAN SUDDICK (Inside-forward)

Height 5ft. 11ins. Weight 10st. 13lbs. Signed from Newcastle in December 1966. Former England Youth and Under 23 player. He is an excellent ball player and a good shot. Was the Club's top scorer last season.

TOM HUTCHISON (Winger)

Height 5ft. 11½ins. Weight 11st. 0lbs. A Scot who joined Blackpool from Alloa Athletic in February 1968. A clever ball player who did well for the Club in the latter part of last season, and has settled down well with Blackpool.

HENRY MOWBRAY (Full-back)

Height 5ft. 8½ins. Weight 11st. 8lbs. Signed for Blackpool in 1967 from Scottish club Cowdenbeath. Settled down well with Blackpool and looks a bright prospect for the future.

GORDON MILNE (Half-back)

Height 5ft. 7ins. Weight 10st. 8lbs. Born Preston and played for Preston North End before signing for Liverpool in 1960. An England International and a player of great experience who has proved an asset to the Club.

TOMMY THOMPSON (Full-back)

Height 5ft. 8ins. Weight 10st. 7lb. A former England Amateur International and a very steady performer on either flank. Born at Stockton-on-Tees, he joined Blackpool in August 1961. On the small side for a full-back but has a good turn of speed and is quick in recovery.

JOHNNY JOHNSTON (Inside-forward)

Height 5ft. 8ins. Weight 10st. 7lbs. A new-comer to Blackpool from Glentoran in the Irish League. A most able and enthusiastic player who should develop into a most useful acquisition. Is an Irish Amateur International. Now making his mark with the first team. Has been selected for the Irish Under 23 Team.

LESLIE FISHER (Full-back)

Height 5ft. 8½ins. Weight 11st. 10lbs. Born Southampton, but played his early football with Hull amateur teams. Played in the Hull City Schoolboys Team. Had trials with Blackpool in 1967 and signed professional forms in December of that year. Graduated through the "A" team to the Reserves, where he has played regularly throughout the season. He made one appearance in the first team in the 1968/69 season.

KEVIN THOMAS (Goalkeeper)

Height 6ft. 0½ins. Weight 13st. 4lbs. Signed as an amateur in March 1966 from Prescott Town. Turned professional in June 1966 and has improved tremendously. He is a player of undoubted ability although his first team appearances are few due to the consistency of Taylor.

TONY MARSDEN (Centre-forward)

Height 5ft. 11ins. Weight 10st. 5lbs. A local boy who has played well in the Reserve team as centre-forward. Should develop into a good prospect.

MICKEY BURNS (Outside-left)

Height 5ft. 8ins. Weight 11st. 2lbs. A close season signing from Skelmersdale United. An English Amateur International, with a flair for goal scoring. A tricky ball player, who is always searching for goals. Should be a useful acquisition for the Club.

DENNIS WANN (Inside-forward)

Height 5ft. 7ins. Weight 9st. 7lbs. A local boy who played with the Blackpool Youth team. Joined Blackpool as an apprentice when 16 years of age. Signed professional forms in 1968 on his eighteenth birthday. A keen and enthusiastic player who should make his mark with the Club. Has attended training sessions with the F.A. Youth team.

Division I I

Fixture List

August

9	Blackburn Rovers	(A)	0—2
13	Cardiff City	(A)	2—2
16	Carlisle United	(H)	2—2
19	Cardiff City	(H)	2—1
23	Aston Villa	(A)	2—0
30	Charlton Athletic	(H)	5—0

September

2	League Cup (2) Swansea	(A)	3—1
6	Blackpool	(A)	2—3
13	Oxford United	(H)	0—0
16	Middlesbrough	(A)	0—0
20	Queen's Park Rangers	(A)	0—2
24	League Cup (3) Oxford	(A)	0—1
27	Leicester City	(H)	1—1
30	Millwall	(H)	2—1

October

4	Bolton Wanderers	(A)	1—0
7	Carlisle United	(A)	2—2
11	Sheffield United	(H)	2—1
18	Hull City	(H)	1—0
25	Portsmouth	(A)	1—3

November

1	Norwich City	(H)	2—0
8	Birmingham City	(A)	0—2
15	Watford	(A)	0—0
22	Huddersfield Town	(H)	2—1
29	Preston North End	(A)	1—3

December

6	Bristol City	(H)	1—1
13	Oxford United	(A)	0—0
26	Aston Villa	(H)	1—1
27	Charlton Athletic	(A)	1—1

1970

January

3	F.A. Cup Blackburn		4—0
10	Queen's Park Rangers	(H)	0—0
17	Leicester City	(A)	2—0
24	F.A. Cup (4) Chester	(H)	4—2
31	Bolton Wanderers	(H)	3—2

February

7	F.A. Cup (5) Scunthorpe	(H)	3—1
9	Sheffield United	(A)	2—1
21	F.A. Cup (6) Leeds	(H)	0—2
28	Hull City	(A)	1—1

March

3	Portsmouth	(H)	3—1
14	Preston North End	(H)	1—0
21	Bristol City	(A)	3—3
24	Huddersfield Town	(A)	1—1
28	Watford	(H)	1—0
30	Norwich City	(A)	0—1
31	Birmingham City	(H)	4—1

April

4	Millwall	(A)
7	Blackpool	(H)
14	Middlesbrough	(H)
20	Blackburn Rovers	(H)

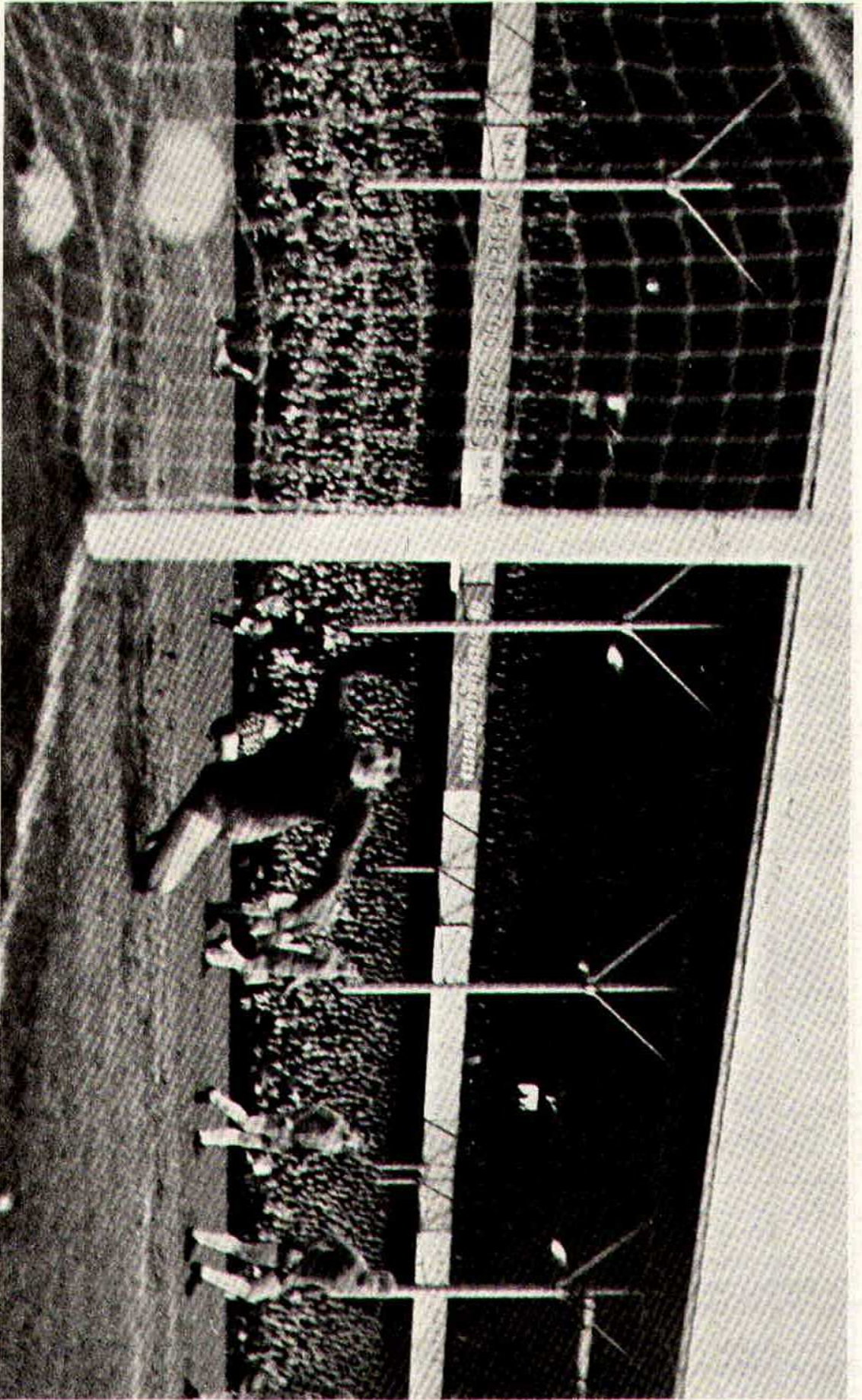
Appearances

Name	Div. II	League Cup	F.A. Cup	Cup Winners Cup
Downsborough	38	2	4	2
Thomas	38	2	4	2
Trollope	38	2	4	2
Butler	38	2	4	2
Burrows	34	2	4	1
Harland	37	2	4	2
Smith	24 (1)	2	4	2
Horsfield	36	2	4	2
Smart	38	2	4	2
Noble	35	2	3	2
Rogers	30	2	4	2
Jones	9 (3)		1 (1)	(1)
Blick	1 (4)			1
Heath	16 (1)			
Down	(1)			
Penman	1		(1)	
Dawson	3			

(Playing as substitute in brackets)

Goalscorers

Name	Div. II	League Cup	F.A. Cup	Cup Winners Cup
Horsfield	16		4	3
Noble	12	3	1	1
Jones	5		1	1
Rogers	8		1	
Smith	2		1	
Burrows	2			
Trollope	3			
Thomas	1			
Smart	2		1	
Butler	1		1	
Opponents	2			



This shot by Butler (out of picture) beats Latchford, Birmingham City goalkeeper, to put Swindon one up.

Previous Matches

DIVISION II

SATURDAY, 28th MARCH, 1970

Beat Watford (Home) 1—0.

Team: Downsborough; Thomas, Trollope; Butler, Dawson, Harland; Smith, Smart, Horsfield, Noble, Rogers.

Scorer: Trollope.

Attendance: 22,597.

Referee: Mr. V. James (York).

MONDAY, 30th MARCH, 1970

Lost to Norwich City (Away) 1—0.

Team: Downsborough; Thomas, Trollope; Butler, Dawson, Harland; Smith, Smart, Horsfield, Noble, Rogers. Sub. Jones.

Attendance: 16,300.

Referee: Mr. H. Davey (Mansfield).

TUESDAY, 31st MARCH, 1970

Beat Birmingham City (Home) 4—1.

Team: Downsborough; Thomas, Trollope; Butler, Dawson, Harland; Smith, Smart, Horsfield, Noble, Rogers.

Scorers: Rogers (2), Butler, Horsfield.

Referee: Mr. C. Thomas (Rhondda).

FOOTBALL COMBINATION

SATURDAY, 28th MARCH, 1970

Lost to Walsall (Away) 2—0.

Team: Grzadkowski; Allen, Claypole; Handrick, Grubb, Dakin; Moss, Hubbard, Fry, Stroud, Marsh.

Referee: Mr. W. G. Soames (Wellingborough)

FOOTBALL COMBINATION CUP

THURSDAY, 2nd APRIL, 1970

Beat Cardiff City (Home) 2—0.

Team: Jones; Allen, Claypole; Handrick, Blick, Bailey; Moss, Heath, Down, Jones, Dangerfield. Sub. Stroud.

Scorers: Down, Jones.

The man in the middle

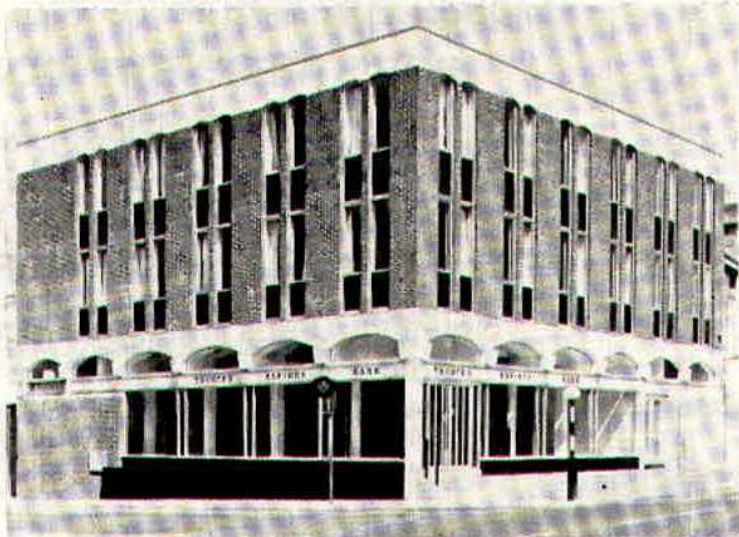


T. H. C. REYNOLDS

Age 36 years. Started refereeing in Bristol during 1958. Graduated through local League, Welsh League and Combination to Football League Line in 1966, this being his second season as a League referee. As a player he played at right-half and still plays five-a-side whenever possible. Other sports include squash for Swansea, and he also enjoys tennis and water skiing. Married to a soccer widow, he is a member of the Round Table. Occupation — Estate Developer (Managing Director). This will be his fifth visit to Swindon Town.

T RUSTEE
S AVINGS
B ANK

93 Commercial Road
Swindon



Facilities include

- CURRENT ACCOUNT SERVICE
- 24 HOUR CASH DISPENSER
- T.S.B. UNIT TRUST
- CONTRACTUAL SAVINGS SCHEME
(giving substantial Tax benefits)

**INTEREST 7% IN THE
SPECIAL INVESTMENT DEPT.**

DON ROGERS SPORTS

29 FARINGDON ROAD SWINDON

Telephone 27378

Main suppliers to Swindon Town Football Club

Stockists of

**All leading makes of Football Boots and Clothing
Table Tennis, Badminton, Rugby and Hockey equipment**

IN FACT THE COMPLETE SPORTS OUTFITTER

RIMES of SWINDON

POPULAR EXCURSION TO

Fare

Saturday, 11th April

WEMBLEY
(F.A. Cup Final)
Chelsea v. Leeds

Dept. 10.00 hrs.

adult child

17/6 12/-

(Coach fare only)

SERVICE DIRECT TO THE GROUND
ALL SEATS NUMBERED AND RESERVED

Book now at

102 Commercial Rd., Swindon

Telephone 27113

46 Cricklade St., Cirencester

Telephone 3479

or with any of Rimes Booking Agents

Dobell Shearman & Co. Ltd.

HIGH STREET SWINDON

Telephone 4961

FANCY and COMMERCIAL STATIONERS

TYPEWRITERS and OFFICE EQUIPMENT

Greetings Cards for all Occasions
from Leading Art Publishers



W. J. CASTLE

Office and Bakery

4 and 5 MARKET STREET

SWINDON

Telephone 22017

Specialists—

BIRTHDAY CAKES - WEDDING CAKES

DAIRY CREAM - PASTRIES

BUNS - ROLLS - SPONGES



Today our new . . .

GOLDEN GOAL COMPETITION

Tickets bearing the time in minutes and seconds will be on sale before the game – price **one shilling**

The ticket with the exact time when the **FIRST GOAL** is scored will win

£60

The ticket bearing the time when the **LAST GOAL** is scored will win

£10

The official announcer will be the timekeeper and he will announce the official time of both goals.

Should only one goal be scored the winning ticket holder will receive £70. In the event of no goals tickets bearing no score will win £10

A further prize of £10 will also be given for the ticket bearing the number corresponding to the official attendance at the match

Be sure to get your ticket – Watch for the

GOLDEN GOAL GIRLS!

HARRY LUNN

(Ex NOTTS COUNTY, PORTSMOUTH and SWINDON TOWN F.C.)

Fish Bar and Restaurant
27-28 COMMERCIAL ROAD SWINDON

RESTAURANT open 9 a.m. to 10 p.m. for

Snacks - Lunches - High Teas - Evening Meal

FISH BAR open Mid-day and Evenings until 11 p.m.

HULFORD MOTORS LIMITED

SELF DRIVE HIRE

Fleet of 1969/8 Fords Escorts De-Luxe
Cortinas De-Luxe Cortinas 1600 Estate
(Bench Seat Column Change) — Zephyr V4s

SHRIVENHAM ROAD

(200 yards from Football Ground)

Telephone 4934

Large Car Park Available

COWLEY BROS. (Wroughton) LTD.

BUILDERS OF MODERN ATTRACTIVE
HOUSES and BUNGALOWS

Developments at

SWINDON

WROUGHTON

BADBURY

Office

28 NEWPORT STREET
SWINDON

Telephone Swindon 6870

Reserved for British Rail



Inter-City

Focus on Promotion

TOP POSITIONS

Huddersfield Town	41	23	12	6	65	36	58
Blackpool	39	19	12	8	52	42	50
Leicester City	40	18	12	10	60	47	48
Middlesbrough	40	19	10	11	52	43	48
Sheffield United	40	21	5	14	68	36	47
Swindon Town	39	16	15	8	55	43	47

and Relegation

BOTTOM POSITIONS

Birmingham City	41	11	11	19	51	72	33
Watford	39	9	11	19	41	52	29
Charlton Athletic	40	6	17	17	33	72	29
Preston North End	40	8	12	20	42	58	28
Aston Villa	40	6	13	21	33	62	25

Forthcoming Matches on This Ground

TUESDAY, 14th APRIL, 1970

Division II

SWINDON TOWN v. MIDDLESBROUGH

Kick-off 7.30 p.m.

SATURDAY, 18th APRIL, 1970

Football Comination

SWINDON TOWN v. FULHAM

Kick-off 3 p.m.

MONDAY, 20th APRIL, 1970

Division II

SWINDON TOWN v. BLACKBURN

Kick-off 7.30 p.m.

DEVELOPMENT FUND COMPETITION

Our main problem, like so many clubs, is to find new agents for our Competition. In the belief that many of you would be prepared to help if not 'saddled' with too big a weekly commitment, we are making a special appeal today to supporters willing to take just **ten** tickets per week.

Tickets are sent through the post together with a stamped addressed envelope for return of proceeds (and unsold tickets) so that agents are put to the minimum inconvenience, and with a weekly issue of only ten tickets a new agent would quickly find that 'selling' is hardly necessary.

Within one's own family circle and neighbours a demand for ten tickets can quickly be established.

As in life, help is of the greatest value when needed most, so today we appeal to everyone – it's 'your Club, your Town, your Team' – and a little help from a lot of people could work miracles.

Give us a hand by filling in the coupon below for just ten tickets a week, and send to: The Secretary, Swindon Town F.C., County Ground, Swindon, or hand it into the office after today's game.

Name _____

Address _____

} Block
} Capitals
} please

I am not under 18 years of age. Please send me ten Development Fund Competition tickets per week.

Suppliers to the Swindon Team
MAY WE SUPPLY YOU?



EARLE

of Chippenham Limited

MAIN

FORD

DEALERS

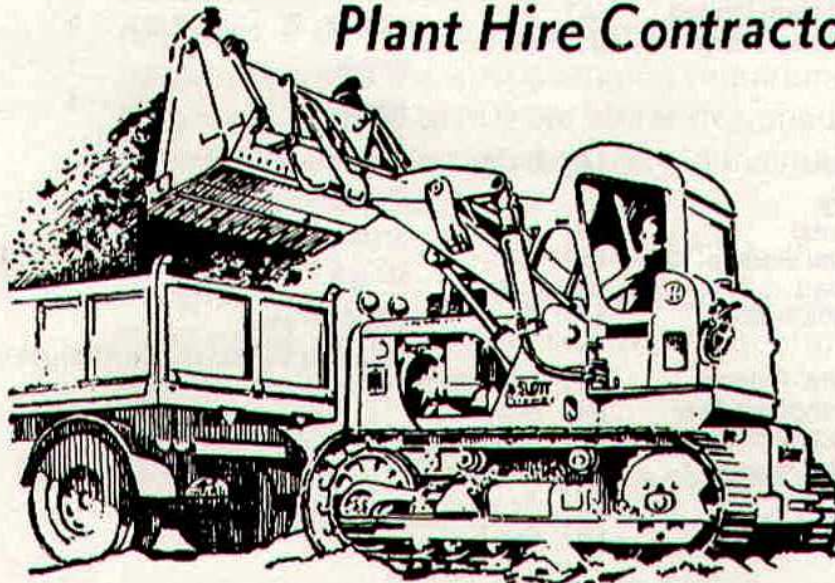
COCKLEBURY ROAD CHIPPENHAM

Telephone 3255

H. HIBBERD LIMITED

FOR YOUR EARTH-MOVING EQUIPMENT

Plant Hire Contractors



40 NEWPORT STREET SWINDON

Telephone Swindon 6125

Football Combination

Fixture List

1969

August

9	Southampton	(H)	2—2
16	Swansea Town	(A)	0—1
23	Queen's Park Rangers	(H)	1—4

September

4	Oxford United	(A)	2—0
6	Bristol City	(H)	1—2
17	Cardiff City	(A)	3—2
20	Arsenal	(H)	1—2
27	Luton Town	(A)	0—2

October

4	Reading	(H)	1—2
7	Bristol Rovers	(A)	P
11	Ipswich Town	(A)	1—0
21	Bristol City	(A)	2—7
25	Crystal Palace	(H)	1—0

November

8	Plymouth Argyle	(H)	3—1
15	Crystal Palace	(H)	1—2
22	Swansea Town	(A)	1—1
29	Tottenham Hotspur	(H)	1—4

December

8	Peterborough United	(A)	0—2
13	Leicester City	(H)	0—2
17	Plymouth Argyle	(A)	1—1
20	West Ham United	(A)	3—1
27	Swansea Town	(H)	0—2

1970

January

27	Arsenal	(A)	0—5
----	---------	-----	-----

February

3	Arsenal	(H)	0—4
10	Bristol Rovers	(H)	P
17	Walsall	(A)	P
24	Northampton	(A)	4—1

March

11	Crystal Palace	(A)	P
16	Birmingham City	(H)	0—4
18	Norwich City	(A)	2—2
21	Bristol Rovers	(A)	1—0
24	Chelsea	(H)	4—1
28	Walsall	(A)	0—2

April

2	Cardiff City	(H)	2—0
13	Crystal Palace	(A)
20	Bristol Rovers	(H)

Name	Appearances		Goalscorers	
	Foot. Comb.	Foot. Comb. Cup	Foot. Comb.	Foot. Comb. Cup
Price	1			
Dawson	10	5		
Fry	15	5		
Desmeules	10	4		
Blick	21	7		
Handrick	21 (1)	8	2	
Heath	6	3		
Penman	15	3	2	
Down	17	6	6	
Dangerfield	18 (1)	7	14	1
Moss	7 (1)	2		1
Bailey	16 (2)	7	1	
Grzadowski	4			
Hubbard	20	5		
Jones (R)	14	6		
Allen (K)	11	4		
Jones (C)	4	3		
Wetson	1	1		1
Claypole	16	4		
Porter	6	4	4	1
Allen K. R.	2	2		
Smith		1		1
Boyd		1		
Grubb	1			
Dakin	1			
Stroud	1	(1)		
Marsh	1			
Opponents			1	

(Playing as substitute in brackets)

AKERS GARAGE LIMITED

THE STREET MOREDON SWINDON WILTSHIRE

Telephone Swindon 3457/8

main dealer for
VAUXHALL/BEDFORD
and
Parts and Accessories
Sales and Service

Showrooms open
MONDAY to FRIDAY — 8 a.m. to 8 p.m.
SATURDAY — Closed 7 p.m.
SUNDAYS — 10 a.m. to 2 p.m. for Petrol and Viewing



MODERN LIVING IN EXPERIENCED HANDS

Wilson homes are the result of over 60 years experience in house building. The Company Architect and his design team are always researching into the ever changing requirements of home buyers, to give them better designed homes, which are easy to run, easy to maintain and comfortable to live in.



All our houses and bungalows are built to the stringent specification of the National House Builders Registration Council who will guarantee your home for 10 years.

Visit a Wilson Show Home and you will see for yourself why Wilson's have such a reputation in giving value for money.

WILSON

(Swindon) LTD., 90-92 Commercial Road, Swindon Telephone 6361 (3 lines)

seating manufacturers for Stadium Seats Ltd

- * Heavy, medium and light steel fabrication
- * Custom made production line equipment
- * Ancillary work for industry and the building trade

FAST EFFICIENT SERVICE BY



MARTYN LYNSHAW LTD

BOUNDARY WORKS · STRATTON ROAD · SWINDON · WILTS

Telephone 21844

spectator seating in high density polyethylene

- * Supplied to over 36 Football League clubs
- * Any colour. No maintenance
- * Industrial seats for the food, electronics and pharmaceutical industries
- * Largest supplier of spectator and industrial seating in Europe

STADIUM SEATS LTD

STRATTON ROAD · SWINDON · WILTS Telephone 21844